



# Baseline V4.6

## Release Notes



# Legal Information

## Copyright

© 2020 ZHEJIANG DAHUA VISION TECHNOLOGY CO., LTD. All rights reserved.

This document cannot be copied, transferred, distributed, or saved in any form without the prior written permission of Zhejiang Dahua Vision Technology Co., LTD (hereinafter referred to as "Dahua").

The products described in this document may contain the software that belongs to Dahua or the third party. Without the prior written approval of the corresponding party, any person cannot (including but not limited to) copy, distribute, amend, abstract, reverse compile, decode, reverse engineer, rent, transfer, sublicense the software.

## Trademarks

 and **HDCVI** are the trademarks or registered trademarks of Dahua.

All other company names and trademarks mentioned herein are the properties of their respective owners.

## Disclaimer

- These release notes are for reference only. Slight differences might be found between the release notes and the product.
- Succeeding products and release notes are subject to change without notice.
- If there is any uncertainty or controversy, we reserve the right of final explanation.

# Table of Contents

<b>Legal Information</b> .....	<b>1</b>
<b>Release Notes</b> .....	<b>1</b>
1.1 Overview .....	1
1.2 New Features .....	1
1.3 Fixed Bugs.....	1
1.4 New Feature Details .....	1
1.4.1 New Languages.....	1
1.4.2 Network Connection of VTH.....	1
1.4.3 Adding VTH to DMSS.....	2
1.4.4 DMSS Calling VTH.....	4
1.4.5 Configuring Arm and Disarm .....	5
1.4.6 DMSS Calling VTO .....	6
1.4.7 DMSS Unlocking Door .....	6
1.4.8 DMSS Monitoring VTO .....	7
1.5 Compatibility .....	8
1.5.1 Program.....	8
1.5.2 Browser .....	8
1.5.3 Third Party Access.....	8
1.6 Software Environment .....	9
1.7 Pending Issues.....	11
1.8 Update Guide .....	11
1.8.2 Upgrading One Device .....	12
1.8.3 Upgrading Devices in Batches .....	12

# Release Notes

## 1.1 Overview

Item	Description
Product model	Indoor Monitor; Apartment Outdoor Station; Modular Door Station; Villa Door Station
Version	V4.6
OS requirement	Linux
Release date	August 30, 2022

## 1.2 New Features

Feature	Description
1	Supports main programs in Western European languages, Northeastern languages and Southeast Asian languages.
2	VTH can be added to DMSS through WI-FI or IP network, and supports APP remote unlocking, audio and video intercom and more.

## 1.3 Fixed Bugs

None.

## 1.4 New Feature Details

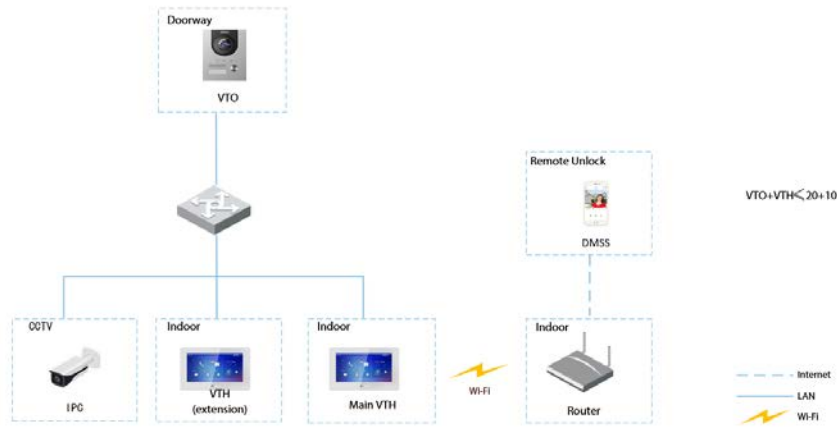
### 1.4.1 New Languages

- Western European languages: British English.
- Northeastern languages: English (default), Serbian, Czech, Slovenian, Greek, Hungarian, Polish, Romanian, Slovak, Danish, Latvian, Finnish, Bulgarian, Lithuanian and Hebrew.
- Southeast Asian languages: English (default), Traditional Chinese (Taiwan, China), Traditional Chinese (Hong Kong, China), Japanese, Thai, Korean and Vietnamese.

### 1.4.2 Network Connection of VTH

The VTH can be connected to the network, and be added to the DMSS for management. For the typical topology, see the following diagrams.

Figure 1-1 Topology of the VTH



It supports both Wi-Fi and wired network connection.

- VTOs and VTHs are connected through cables.
- The main VTH is added to the DMSS App through Wi-Fi service provided by the router.

### 1.4.3 Adding VTH to DMSS

The network password is used to add the VTH to the DMSS app.

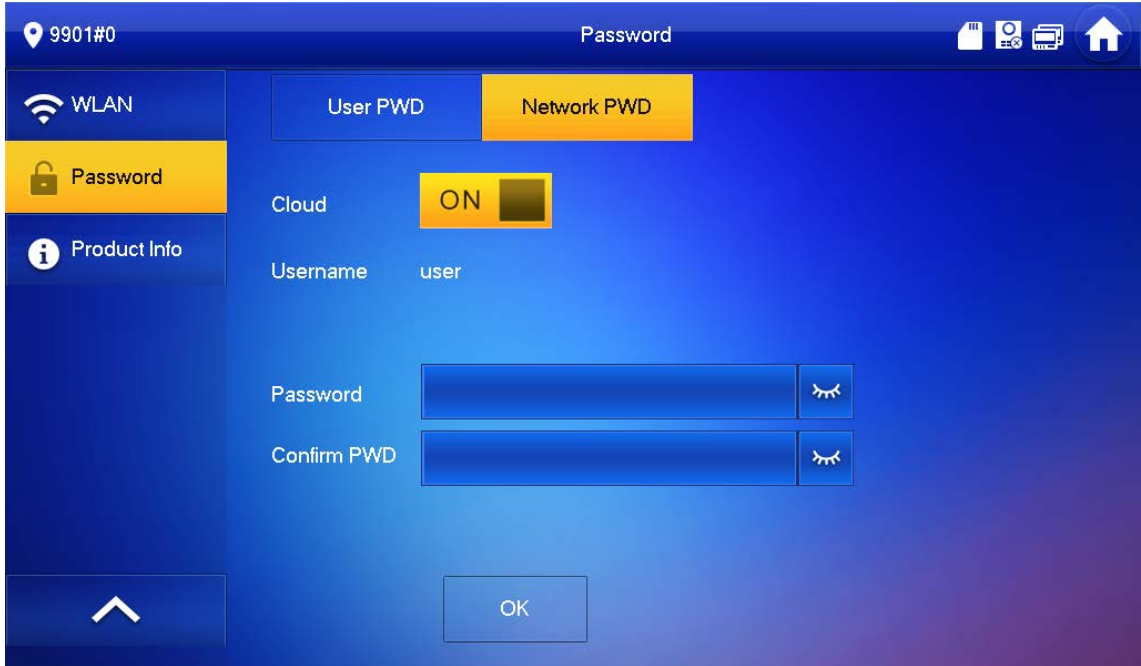
**Step 1** On the VTH home screen, select **Setting > Password > Network PWD**.

**Step 2** Enable Cloud, and create a network password.



The **Username** is **user** by default.

Figure 1-2 Create network password



**Step 3** Scan the QR code at the rear panel of the VTH to obtain the information of the VTH or scan the DMSS QR code in **Setting > General > QR Code** on the VTH to obtain the device information of the VTH.

Figure 1-3 Add VTH

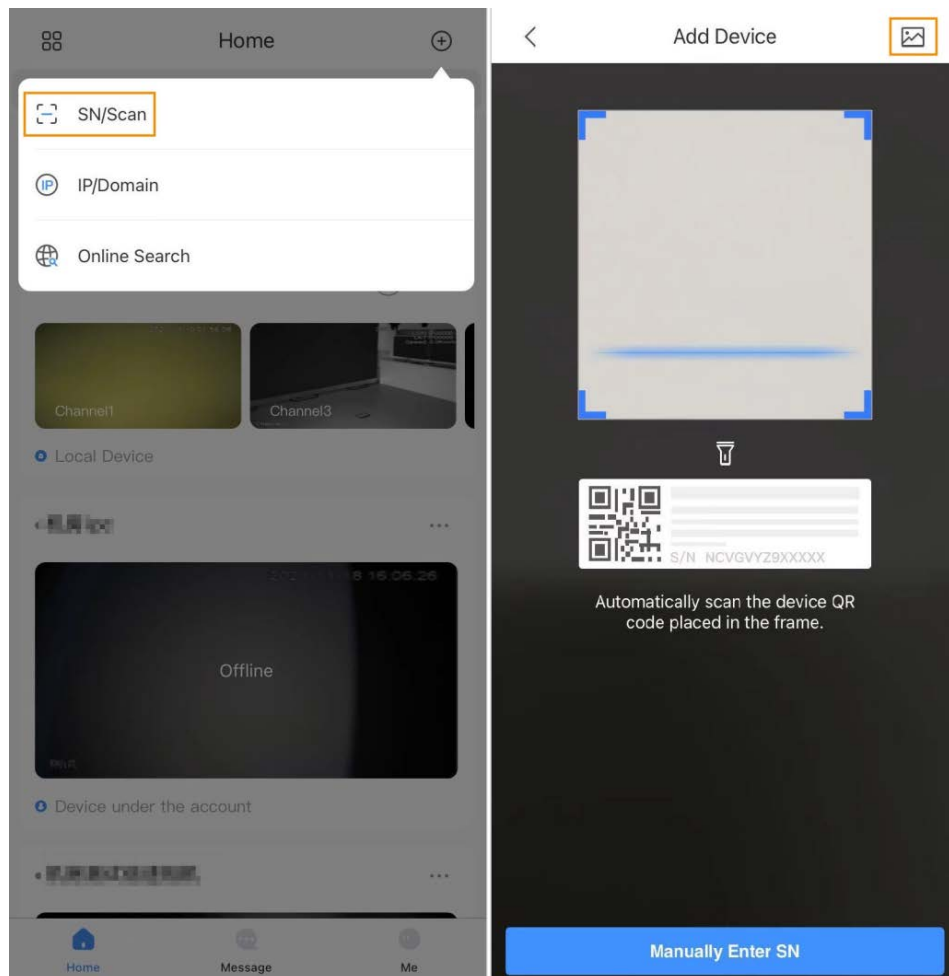


Figure 1-4 Scan QR code

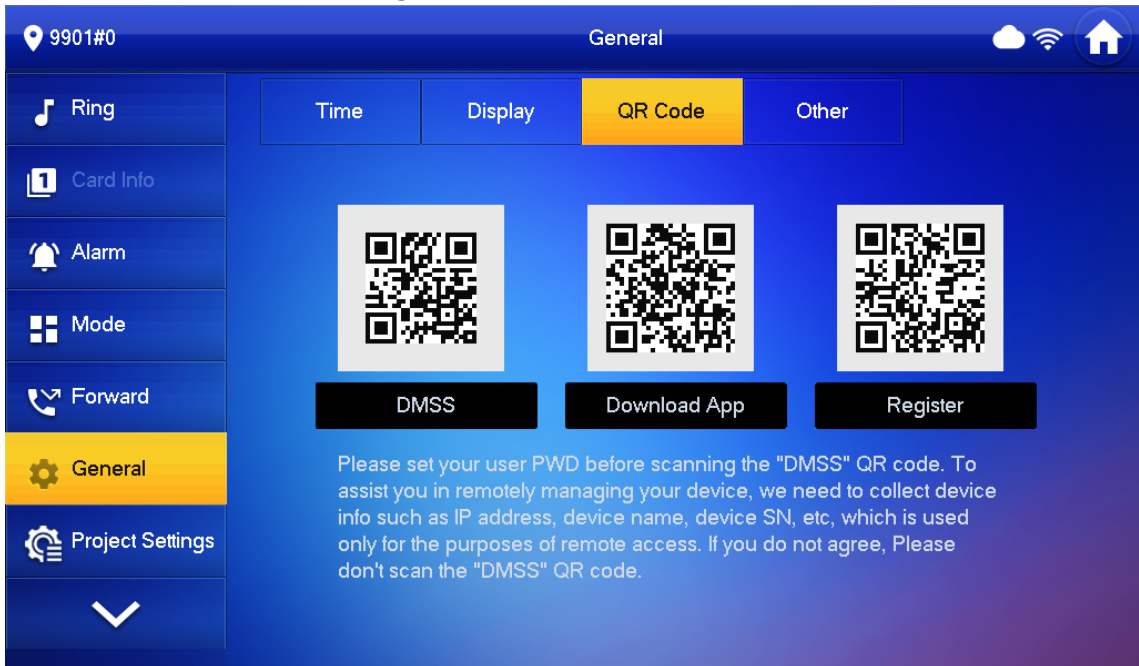
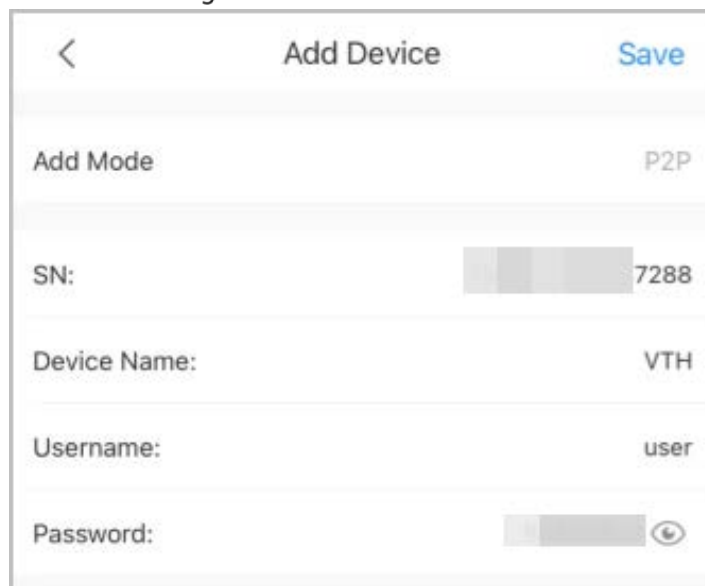


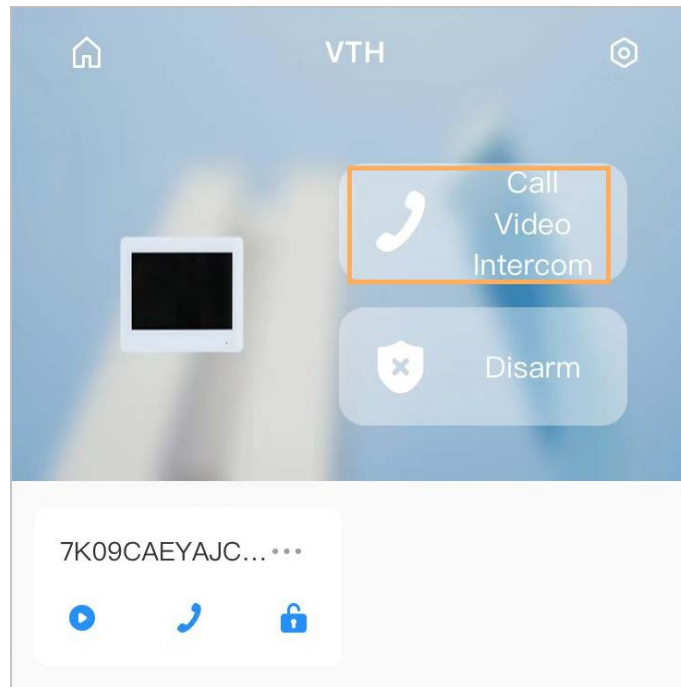
Figure 1-5 Add device



### 1.4.4 DMSS Calling VTH

Make sure that the VTH and VTO are properly connected. Tap **Call Video Intercom** to call the VTH you added to the DMSS.

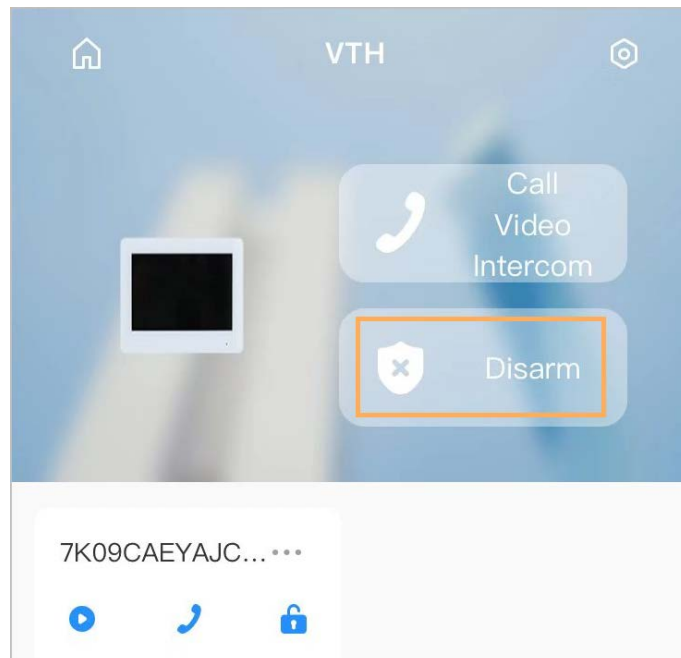
Figure 1-6 Call VTO



### 1.4.5 Configuring Arm and Disarm

**Disarm** or **Arm** to disarm or arm the VTH.

Figure 1-7 Disarm VTO



Select from the arm/disarm mode list, and the arm/disarm configuration would take effect on the VTH after you completed the setting.

- **Sleep:** An alarming mode that allows you to arm the system in the sleep time.



- **Home Mode:** An arming mode that allows you to arm the system when inside the area of the alarm system.
- **Always Mode:** Arm the system when you leave the area of the alarm system.
- **Custom Arming:** Arm the system based on your customized needs.
- **Disarm:** Turn the security system off. The opposite of arming.

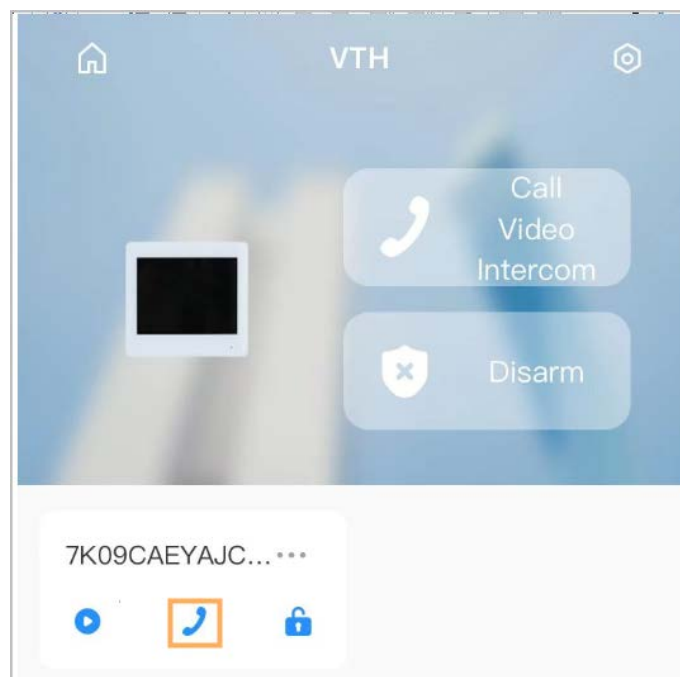
## 1.4.6 DMSS Calling VTO

Call the VTO you added to the DMSS.



If there are more than one VTO, you can call the main VTO and sub VTO respectively.

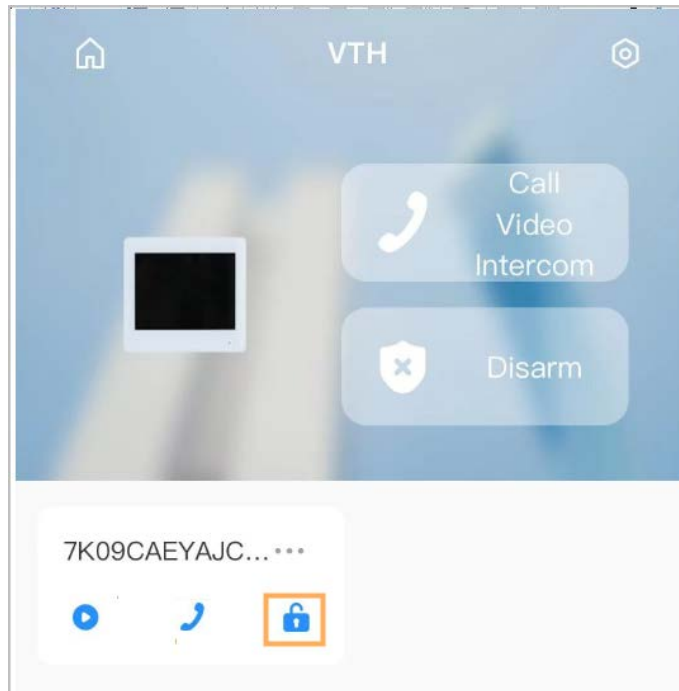
Figure 1-8 Call VTO



## 1.4.7 DMSS Unlocking Door

Unlock the door.

Figure 1-9 Unlock the door



### 1.4.8 DMSS Monitoring VTO

View the monitoring video of the VTO.

Figure 1-10 View monitoring video

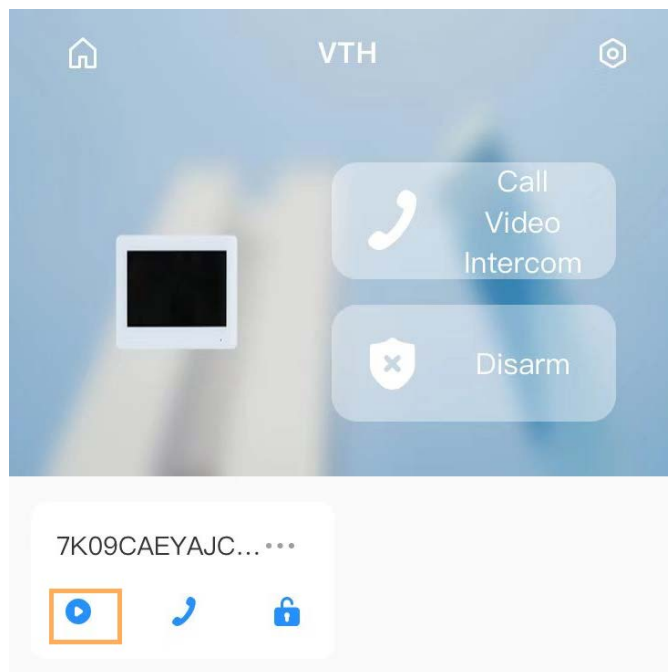


Figure 1-11 Viewing monitoring video



## 1.5 Compatibility

### 1.5.1 Program

Compatible with baseline V4.41, V4.5 and V4.51.

### 1.5.2 Browser

IE10\Firefox\Chrome\Safari.

### 1.5.3 Third Party Access

Only applicable to devices without the face recognition function.

SIP phones:

- GXV3140 (GrandStream) version: 1.0.7.80
  - T21P\_E2 (YeakLink) version: 52.81.0.115
  - HS108 version: 4.3.2.6 10821
  - Panasonic-KX-HDV430NE version: 01.005 (bcc342217214)
- SIP servers:
- 3CX version: 16.0.3.676
  - Asterisk (FreePBX) version: 15.0.16.20
  - Coovox-U20 (ZYCOO) version: 1.1.0
  - Panasonic-MPR12-V004.41012/VSIPEXT-V3.0000
  - Yeastar S20-30.13.0.34

## 1.6 Software Environment

Category	Model	Version
VTO	DHI-DHI-VTO9541D-S 2 DHI-VTO7541G-S2 DHI-VTO7521G-S2	DH_VTO75X95X_MultiLang_PN_SIP_EMEA_V4.600.000000 .0.R.220805 DH_VTO75X95X_MultiLang_PN_SIP_ Asia_V4.600.0000000.0.R.220805 DH_VTO75X95X_MultiLang_PN_SIP_CEE-Nordic _V4.600.0000000.0.R.220805
VTO	DHI-VTO6541H DHI-VTO6531H DHI-VTO6521H DHI-VTO6521H-D DHI-VTO6521F	DH_VTO65XXX_MultiLang_PN_SIP_EMEA_V4.600.0000000 .0.R.220805 DH_VTO65XXX_MultiLang_PN_SIP_Asia _V4.600.0000000.0.R.220805 DH_VTO65XXX_MultiLang_PN_SIP_CEE-Nordic _V4.600.0000000.0.R.220805
VTO	DHI-VTO6521K	DH_VTO6XX1K_MultiLang_PN_SIP_EMEA_V4.600.0000000 .0.R.220805 DH_VTO6XX1K_MultiLang_PN_SIP_Asia _V4.600.0000000.0.R.220805 DH_VTO6XX1K_MultiLang_PN_SIP_CEE-Nordic _V4.600.0000000.0.R.220805
VTO	DHI-VTO4202F-P-S2 DHI-VTO4202FB-P-S2 DHI-VTO2202F-P-S2 DHI-VTO2202F-L DHI-VTO2201F-P	DH_VTOXXXXD-G-S2_MultiLang_PN_PAAS_SIP_EMEA_V4. 600.0000000.0.R.220813 DH_VTOXXXXD-G-S2_MultiLang_PN_PAAS_SIP_Asia _V4.600.0000000.0.R.220813 DH_VTOXXXXD-G-S2_MultiLang_PN_PAAS_SIP_ CEE-Nordic_V4.600.0000000.0.R.220813

Category	Model	Version
VTO	DHI-VTO3221E-P DHI-VTO6221E-P	DH_VTOX221E_MultiLang_PN_PAAS_SIP_EMEA_V4.600.000000.0.R.220805 DH_VTOX221E_MultiLang_PN_PAAS_SIP_Asia_V4.600.0000000.0.R.220805 DH_VTOX221E_MultiLang_PN_PAAS_SIP_CEE-Nordic_V4.600.0000000.0.R.220805
VTH	DHI-VTH5221D-S2 DHI-VTH5221DW-S2 DHI-VTH5241DW-S2 DHI-VTH5421E-H DHI-VTH5421EW-H DHI-VTH2421FB-P DHI-VTH2421FW-P	DH_VTHX421H_MultiLang_SIP_EMEA_V4.600.0000000.0.R.220819 DH_VTHX421H_MultiLang_SIP_Asia_V4.600.0000000.0.R.220819 DH_VTHX421H_MultiLang_SIP_CEE-Nordic_V4.600.0000000.0.R.220819
VTH	DHI-VTH2621G-WP DHI-VTH2621GW-WP DHI-VTH2621G-P DHI-VTH2621GW-P DHI-VTH2622G-W DHI-VTH2622GW-W DHI-VTH5421HB-W DHI-VTH5421HW-W DHI-VTH5421HB DHI-VTH5421HW DHI-VTH5422HB-W DHI-VTH5422HW-W DHI-VTH5422HB DHI-VTH5422HW DHI-VTH8621KMS-W P DHI-VTH8641KMS-W P DHI-VTH8622KMS-W DHI-VTH8642KMS-W	DH_VTHX6XXX-SX_MultiLang_SIP_EMEA_V4.600.0000000.0.R.220819 DH_VTHX6XXX-SX_MultiLang_SIP_Asia_V4.600.0000000.0.R.220819 DH_VTHX6XXX-SX_MultiLang_SIP_CEE-Nordic_V4.600.0000000.0.R.220819
ConfigTool	—	V5.000.0000001.8
DSS-Pro	—	V8.000.0000004
DMSS	—	DMSS: V1.99.100

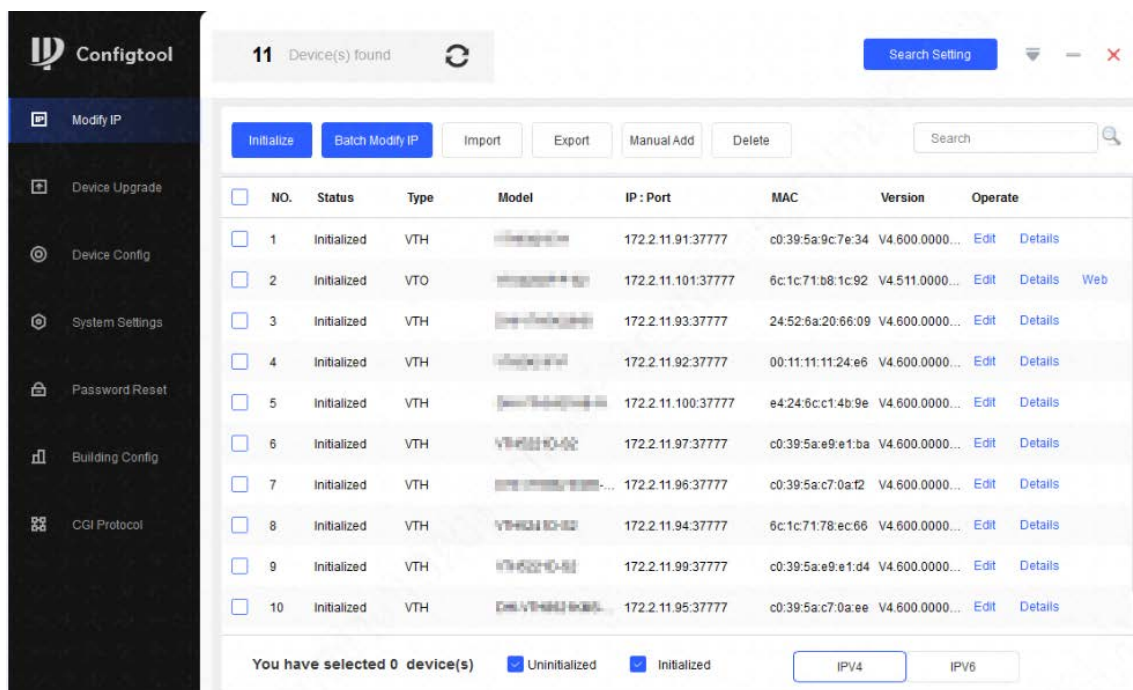
## 1.7 Pending Issues

No.	Issue Description	Possible Result	How to Fix
1	When VTO4202F-P-S2 is connected to a display, the time on the display and the device webpage are not consistent.	The device synchronizes its time with the system time every 1 minute, and there might be a difference in seconds.	Fix it in the next version.

## 1.8 Update Guide

You can update one or more devices on the PC where the ConfigTool is installed.

Figure 1-12 Open the ConfigTool



Upgrade speed varies depending on the package size.

- If package < 100 MB, the Tool loads the package 1 KB every time. The speed cannot be modified.
- If package size ≥ 200 MB, the Tool loads the package at 16 KB every time. The speed cannot be modified.
- If 100 MB ≤ package size < 2 GB, the Tool loads the package 1 KB every time. To speed up the process, you can set the speed to 16 KB every time.



If the device disconnects during update, the device might restart and automatically tries to update again.

- If the system notices **Upgraded successfully**, search the devices again and the devices with upgraded versions show up.
- If the system notices **Wait for retry**, wait for 1 - 2 minutes and then retry.
- If the system notices **Upgrade overtime** or **Failed to upgrade**, search the device and upgrade again.

## 1.8.2 Upgrading One Device

Step 1 Click Device Upgrade.

Figure 4-9 Upgrade

<input type="checkbox"/>	NO.	Model	IP	Version	Upgrade File Path	Operate
<input type="checkbox"/>	1	VT...	...	...		
<input type="checkbox"/>	2	VT...	...	...		

Step 2 Click next to the device that you want to upgrade. Select the specific file that needs to be upgraded, and then click **Open**.



If the device is not in the device list, perform search again.

Step 3 Click to start upgrading.

After upgrade is complete, a **Prompt** dialog box will be displayed indicating the device will be restarted, and then the device restarts automatically.

## 1.8.3 Upgrading Devices in Batches

You can upgrade multiple devices in the same software version.

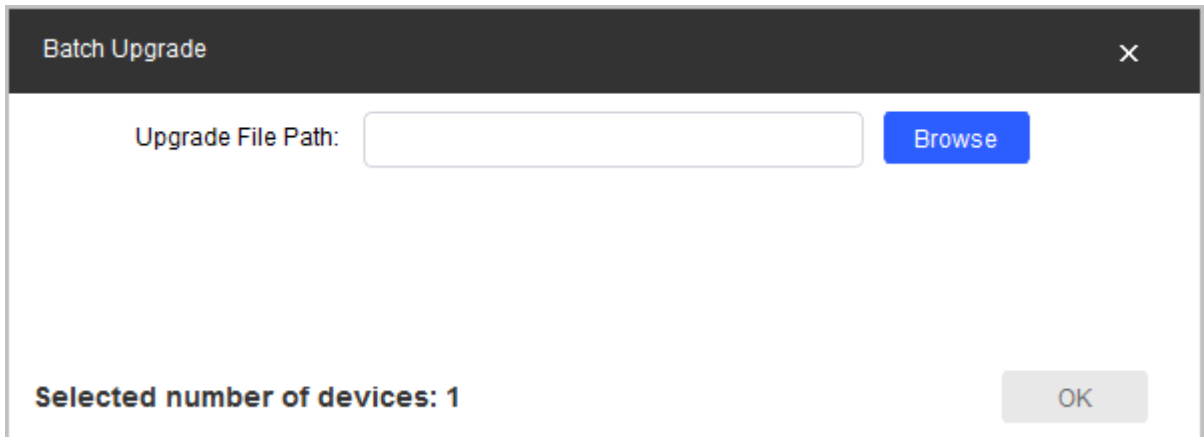
Step 1 Click Device Upgrade.

Step 2 Select the devices that need to be upgraded.



- If the device is not in the device list, perform search again.
- Make sure all selected devices can receive the same software update.

Figure 4-10 Batch upgrade



Step 3 Click **Batch Upgrade**.

Step 4 Click **Browse** to select the files that need to be upgraded.

Step 5 Click **OK**.



DH\_VTHX421H\_MultiLang\_SIP\_V4.600.0000000.0.R.220819 needs to be updated twice.

- 1) Upgrade \*part1.bin
- 2) Upgrade \*part2 after part1 is successfully upgraded.



**ZHEJIANG DAHUA VISION TECHNOLOGY CO., LTD.**

Address: No.1199, Bin'an Road, Binjiang District, Hangzhou, P.R. China

Postcode: 310053

Tel: +86-571-87688883

Fax: +86-571-87688815

Email: [overseas@dahuatech.com](mailto:overseas@dahuatech.com)

Website: [www.dahuasecurity.com](http://www.dahuasecurity.com)